



## BIG PLUS

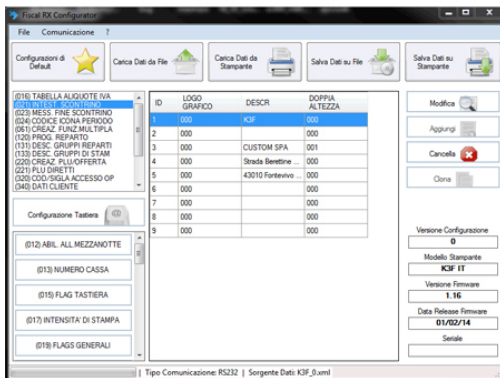
### Functional and reliable cash registers

**BIG PLUS** are Custom's newborn cash registers. Thanks to the new processors used, they combine the aesthetic and functional advantages of the **BIG** family with modern, low power consumption technologies. The **BIG PLUS** cash registers have been designed to provide the greatest user-friendliness with unique performances that make it functional and reliable. Equipped with embedded 58 mm thermal printer, keyboard with 40 customizable keys and backlit blue graphic display (2x20 characters operator/customer) **BIG PLUS** are capable of printing graphic logos on header and footer and are approved for printing negative receipts (returns) and for printing invoices directly on the receipt.



## CARATTERISTICI

- 40 keys alphanumeric embedded keyboard
- Embedded operator and customer LCD backlit displays, with 2 lines x 20 characters
- Embedded 58mm printer with easy paper loading
- Electronic journal on MultiMediaCard/SD
- Size: 248mm x 246mm x 100mm
- User-friendly paper roll replacement system
- Receipts with tax ID
- Approved for negative receipts (returns)
- Graphic logo on the receipt (header and footer)
- Approved for invoice printing on fiscal receipt
- PC connection
- Fiscal, financial, statistical and historical reports
- Customizable receipt graphics
- Operating temperatures from 0° at +45°
- One dedicated drawer port (6 Volts)



### Fiscal RX Configurator

Self-installing software tool that allows the complete programming of the printer with data saving and reactivation through PC, in addition to the keyboard customization and the graphic logos' transferring. Valid for Windows operating system.

**FI?? TEHNIC?**

<b>Electronic Journal</b>	SD Card SLC Industrial "long life", up to 1,500,000 lines (about 300 rolls)
Keyboard	Embedded alphanumeric keyboard with 40 customizable positions
Display	Embedded operator and customer LCD backlit blue displays, with 2 lines x 20 characters
Paper width	58 mm
Printing speed	80mm/sec
Interfaces	Ethernet+RS232+USB (for remote programming tools), 1 dedicated drawer port (6 Volts)
PLUs	30 (free and prefixed)
Items	1000
Customers	50 (with total management sold)
Payment types	7
VAT rates	6
Reports	Fiscal, financial, sales statistics and historians
Graphics	Graphic logos on receipt header and footer
Protocols	CUSTOM, CUSTOM DLL and XON/XOFF
Dimensions	245 (L) x 100,3 (H) x 248.7 (W) mm
Weight	1244 g

CUSTOM SPA - Via Berettine, 2 - 43010 Fontevivo PR - TVA: IT02498250345 - TEL: +39 0521 680111 - FAX: +39 0521 610701 - COD UNIC: TI80W10

Datele tehnice de pe acest site nu sunt obligatorii și pot fi modificate fără a vă fi notificare.

Ultima actualizare: 21 februarie 2020