



## KPM862

### Boarding Pass and Bag Tag Kiosk Self-Service Printer

KPM862 is the only compact airport printer able to combine **metallic structure, high speed and refined design together with a lower TCO** (Total Cost of Ownership). KPM862 offers efficient and innovative functionalities like the **auto-calibration**, that avoid the waste of paper through auto-calibrating sensors that can adapt to an infinite number of media types. The **multi feeder** version is useful for reducing waiting times by increasing printing volumes, the **RFID** configuration allows you to have a product already prepared for future needs. **Veriprint®** technology allows to instantly validate the barcode of a bag tag or boarding pass preventing a baggage or a passenger are checked-in but carrying an unreadable luggage tag / barcoded boarding pass. TK862 is compatible with **AERO VCOM SERVICE** which supports the most sophisticated AEA communication standards and allows per-airline **dedicated configurations** within standard AEA parameters.



## CARATTERISTICI

- Ultra heavy-duty
- Highly reliable and sturdy
- Very fast and powerful
- Same model for ATB and BTP
- CIS (Contact Image Sensor) to virtually align at any mark/hole/logo. Reduced cleaning compared to standard optical sensors
- Veriprint® Barcode Validation (optional)
- Heavy-duty Autocutter
- RFID (optional)
- Dot-saving function
- Automatic paper length detection
- Full paper auto-loading without paper wasting
- Compatible platforms: CUTE and CUPPS
- Firmware: Native AEA/ITPS from 2007 to 2022 support
- Emulation: ATB, BTP, GPP

## AVAILABLE MODELS

- Base model
  - RFID model
  - Dual Feeder
- 

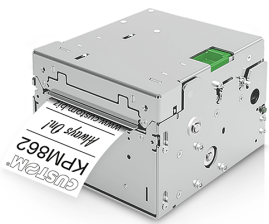
## ACCESSORII

- Power supply
  - Ejector
  - RFID retrofit kit
  - Data cable
  - Power cord
  - Near paper end sensor
-

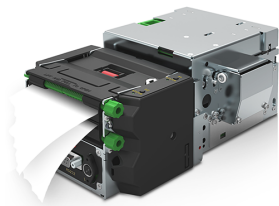
## FI?? TEHNIC?

<b>Printing Method</b>	Thermal with fixed head
Resolution	203 dpi
Printing speed	220 mm/sec (high speed)
Supported Barcode	1D and 2D IATA barcode printing: UPC-A, UPC-E, EAN13, EAN8, Code39, ITF, Codabar, Code93, Code128, Code32, PDF417, Data Matrix, Aztec, QRCode
Paper width	From 40 mm to 86 mm Compliant to IATA Resolution 740, 722e, RP1740
Paper thickness	According to IATA specifications
Paper Roll Diameter	max. 150 mm (only for model with Dual Feeder) max. 300 mm
Sensors	Paper presence, printhead temperature, paper presence on output, CIS (Contact Image Sensor) for black mark or translucent gap/hole, cover open, optional low paper, autocutter error
Compatible platforms	CUTE and CUPPS
Firmware	Native AEA/ITPS from 2007 to 2022 support
Emulation	ATB, BTP, GPP
Interfaces	USB RS232 Ethernet
Automatic cutter	Yes, total cut
Flash Memory	2 MB internal + 8 MB external
RAM Memory	640 KB internal + 8 MB external
Drivers	Windows® (32/64 bit); CUPS Linux (32/64 bit); Virtual COM (32/64 bit) with or without silent installation; Android™
Software Tools	PrinterSet, CustomPowerTool, Status Monitor, Custom Windows API, AeroVcomService remote monitor configuration tool
Power supply	Device: 24 Vdc±10% External power supply: Auto Range, 90-132 Vac & 190-264 Vac
Printhead Life	100Km / 100M pulses
Autocutter	1.000.000 cuts, total cut
Operating temperature	-20°C + 60°C
Dimensions	163.8 mm (L) x 152.5 mm (W) x 96.5 mm (H) (Base model)
Weight	2.15 Kg (Base model)

## MODELE

**915LK010300700**

PRINTER KPM862 CIS ETH USB  
RS232 AVIATION

**915LK010400700**

PRINTER KPM862 CIS+DF ETH  
USB RS232 AVIATION

---

Via I. Newton, 4 - 43010 Fontevivo PR - TVA: IT02498250345 - TEL: +39 0521 680111 - FAX: - COD UNIC: 8RQN7AZ

Datele tehnice de pe acest site nu sunt obligatorii și pot fi modificate fără nicio notificare.

Ultima actualizare: 23 aprilie 2026