



JSMART

Portable and ultra-compact cash register

JSMART is the new portable and ultra-compact cash register that introduces a new low-consumption technology developed by Custom. It is the ideal solution for products with internal battery.

With its modern design and reduced dimensions, JSMART is the perfect product for street vendors, but also for all shops where space dedicated to sales is limited.



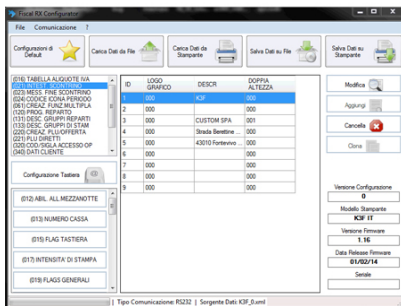
CARATTERISTICI

- For street vendors and shops
- User-friendly paper roll replacement system
- 29 keys water proof keyboard
- Operating temperatures from -10° at +45°
- Receipts with tax ID
- Approved for negative receipts (returns)
- Graphic logo on the receipt (header and footer)
- Battery power adapter provided as standard equipment
- Electronic journal on MMC/SD
- Size: 114mm x 216mm
- 58mm embedded printer with easy paper loading
- Customizable receipt graphics
- Gift/Warranty receipt management

BATTERY:

- Internal battery for machine operation also without power supply
- Performance and autonomy: 20.000 printable lines (about 1.200 receipts)
- Internal rechargeable lithium battery, 7.4V 1500 mAh
- Stand-by function for energy saving

SOFTWARE:



Fiscal RX Configurator:

Self-installing software tool that allows the complete programming of the printer with data saving and reactivation through PC, in addition to the keyboard customization and the graphic logos' transferring. Valid for Windows operating system.

AVAILABLE VERSIONS:

- Embedded GPRS modem version for electronic data transmission

FI?? TEHNIC?

Electronic Journal	SD Card SLC Industrial "long life", up to 1,000,000 lines (about 260 rolls)
Keyboard	29 rubber keys
Display	Backlit graphic display (2x20char./operator-customer)
Paper width	58mm
Printing speed	90mm/sec
Interfaces	ETH+USB (for remote programming tools)
PLUs	12 programmable PLUs, 8 of which directly available on the keyboard
Items	1000
Payment types	6
VAT rates	6
Reports	Fiscal, financial, PLUs and items
Dimensions	114x216mm

CUSTOM SPA - Via Berettine, 2 - 43010 Fontevivo PR - TVA: IT02498250345 - TEL: +39 0521 680111 - FAX: +39 0521 610701 - COD UNIC: T180W10

Datele tehnice de pe acest site nu sunt obligatorii și pot fi modificate fără nicio notificare.

Ultima actualizare: 25 mai 2020