

## KPM862

### RFID ticket printer for OEM integration

KPM862 is the ultra-compact, flexible and sturdy top-of-the-range ticket printer.

Thanks to the adjustable paper guides (ticket width from 40 to 86mm) KPM862 is extremely versatile.

It is available in 2 versions: with dual feeder, thanks to which it is possible to manage 2 different types of paper and with Veriprint, a patented Custom system that can instantly check the readability of the data (e.g. barcode) during the ticket printing phase and thus avoids the issue of tickets with dubious validity. KPM862 can be equipped with original CUSTOM HF / UHF RFID antennas, an exclusive CIS sensor, with whom you can read any type of ticket and ensure the alignment. Ideal for modern kiosks with a slim design, less moving parts (cost reduction) and full ticket scanning.



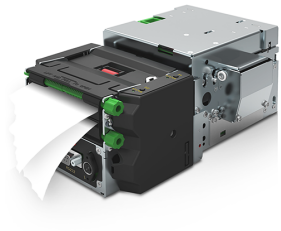
### ZUBEHÖR

- **UHF RFID:** UHF EPC Gen2
- **HF CUSTOM RFID:** Mifare UltraLight, Mifare 1K\4K, Mifare UltraLight EV1, Mifare UltraLight C, Mifare UltraLight C + SAM, Mifare DESFire, Mifare Plus, NTAG 203 (NFC), NTAG 213 (NFC), Sri-Srx-Srt, Calypso, iCode SLI, iCode Texas
- Front ejector to ensure that the ticket falls inside the kiosk
- Selector + ejector to divert the ticket into a special compartment of the kiosk, ideal for RFID applications
- Barcode stock control activation license

## TECHNISCHES DATENBLATT

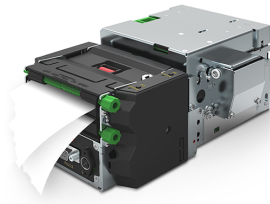
<b>Printing Method</b>	Thermal with fixed head
Number of dots	8 dots/mm
Resolution	203 dpi
Printing (mm/sec)	220 mm/sec (high speed)
Character set	PC437, PC850, PC860, PC863, PC865, PC858
Supported Barcode	1D and 2D: UPC-A, UPC-E, EAN13, EAN8, CODE39, ITF, CODABAR, CODE93, CODE128, CODE32, PDF417, DATAMATRIX, AZTEC, QRCODE, GS1 Databar
Printing Format	Height/Width from 1 to 8, bold, reverse, underlined, italic
Printing Direction	Normal, 90°, 180°, 270°
Paper width	from 40 mm to 86 mm
Paper weight	from 70 to 255 g/m <sup>2</sup>
Paper thickness	max 280 $\mu$ m
Roll Dimension	max 300 mm
Sensors	CIS for notch/gap detection and "stock control" reading
Emulation	Cupps compliant native AEA 2012 support
Interfaces	RS232 / USB (or Virtual COM) / Ethernet
Automatic cutter	Yes, total cut
Flash Memory	2 MB internal + 8 MB external
RAM Memory	640 KB internal + 8 MB external
Drivers	Windows® (32/64 bit) – only on request WHQL and silent installation; CUPS Linux (32/64 bit); Virtual COM (Linux or Windows 32/64 bit); Android™
Software Tools	PrinterSet, CustomPowerTool, Status Monitor, Custom Windows API
Power supply	24 Vdc $\pm$ 10%
Medium consumption	1.12 A (12,5% dots turned on)
Head Life	100Km / 100M pulses
MCBF	1.500.000 cuts
Operating temperature	-20°C + 60°C
Dimensions	163.8(L) x 96.5(H) x 152.5(W) mm (standard model) 182.9(L) x 96.5(H) x 152.5(W) mm (model with ejector) 241.6(L) x 96.5(H) x 152.5(W) mm (model with selector) 240.9(L) x 96.5(H) x 155.5(W) mm (model with dual feeder) 260(L) x 96.5(H) x 155.5(W) mm (model with dual feeder + ejector) 318.7(L) x 96.5(H) x 155.5(W) mm (model with dual feeder + selector)

## MODELLE



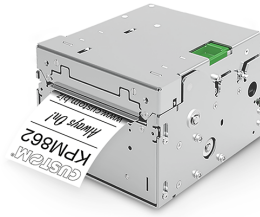
**915LK010800700**

PRINTER KPM862 ETH USB RS232  
DF



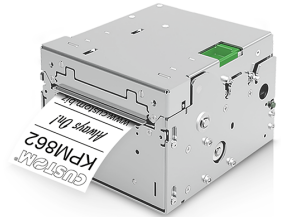
**915LK030300700**

PRINTER KPM862 ETH USB  
RS232 VERIPRINT DF



**915LK010900700**

PRINTER KPM862 ETH USB  
RS232 RFID HF



**915LK010700700**

PRINTER KPM862 ETH USB RS232

---

Via I. Newton, 4 - 43010 Fontevivo PR - UST-.ID: IT02498250345 - TEL: +39 0521 680111 - FAX: - EINDEUTIGER CODE: 8RQN7AZ

Die technischen Daten auf dieser Website sind unverbindlich und können ohne vorherige Ankündigung geändert werden.  
Letzte Aktualisierung: 17 April 2026