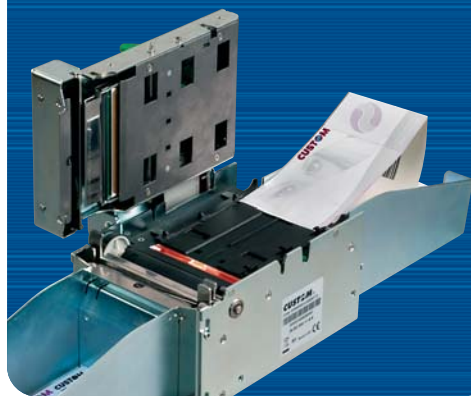


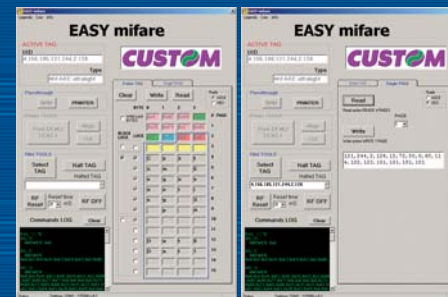


Fan-fold holder



The printer can be equipped with barcode scanner reading pre-printed modules and with RFID (mifare/icode) reader/writer. This optional reader makes the printer suitable for all ticketing applications where user automatic identification and access control are required.

Software tool to read/write data on MIFARE tag



EASY MIFARE

KPM300H

Is a very fast ticket printer, speed > 250mm/sec, on high quality and full printing. The ARM processor (266MHz) allows high and fast processing capability. KPM300H prints on ticket width from 54 to 82.5mm, with paper thickness from 70 to 255g/m2. Sensors: black mark detector in 4 positions and traslucid gap / hole mark detector (setting by software); ticket presence sensor, too. Interfaces: Serial/ USB/ Ethernet. It is available MultiMediaCard (64MB) for logo, font, data storage expansion.

Optional:

- huge paper roll holder
- fan-fold paper holder
- CCD Barcode Scanner
- RFID (mifare/icode) reader/writer

Supported transponder:

- ISO15693
- ISO14443-MIFARE (MIFARE Ultraligh, MIFARE 1K, MIFARE 4K)

	KPM300	KPM300H
Printing method	Thermal fixed head	
Resolution	203 dpi (8 dots/mm) / enhanced quality head	
Printing speed	>180 mm/sec (high speed)	>250 mm/sec (high speed)
Paper width	80/82.5mm	From 54mm to 82.5mm (2mm step)
Paper thickness	70 - 255 g/m2	
Print direction	Straight, 90°, 180°, 270°	
Type styles	Normal, 1x to 8x height and width, reverse, underscored, italic, bold	
Character sets	PC437, PC850, PC860, PC863, PC865, PC858	
Emulation	CUSTOM/POS - CUSTOM/LABEL	
Interfaces	RS232 / USB	RS232 / USB / Ethernet
Data buffer	4 Kb	32 KB
Flash memory	384 Kb	16 MB
Graphics memory	2 logos of 608x862 dots	logos dynamic management (max 1MB graphics memory)
Drivers	Win 2K, XP; Linux	
Software tools	Font Editor; Logo Editor; Status Monitor	
Power supply	24 Vdc ± 10% (optional external power supply)	
Power consumption*	2.5A	3.5A
Head life	100Km / 100M pulses	
MCBF	1.500.000 cutter life	
MTBF**	320.000 hours	467.000 hours
Dimension (mm)	191x123(h)x160	
Weight	3,5Kg	



*average (50% dots on)

**CPU electronic board

- Enhanced Quality Head
- Long Life Cutter
- Very Fast 250mm/sec
- ARM Processor
- Barcode Scanner

KPM300H



Paper roll holder