

KPM216H

A4/US letter format thermal printer ideal solution as statement printers and suitable also for internet, information and multimedia kiosks, ATM's and self-service machines. It is available in two models:

- 203 dpi (8 dots/mm)
- 300 dpi (12 dots/mm).
- Paper width 210/216mm (8,5" - letter).
- Paper thickness 60/100 gr/m².
- Max paper roll diameter 180mm.
- High printing speed >125mm/sec.
- Serial RS232 + USB interface.
- Model with serial RS232 + Centronics parallel is also available. High reliability rotary autocutter.
- "Ejecting" and "retracting" ticket with possibility to set the retracting timeout (retracting function only with vertical model).
- Paper outlet friendly use inspection, thank to cutter easy to lift. Sensors: paper end, last ticket, black mark, ticket availability (near paper end is optional).
- Optional paper roll support.
- Optional 90° paper output.
- Double colour printing (red/black – blue/black).

Dot Damage Prevention

possibility to enable a function that allows to prevent the deterioration of those dots stressed with special printouts like graphics, tables and similar.

KM216H

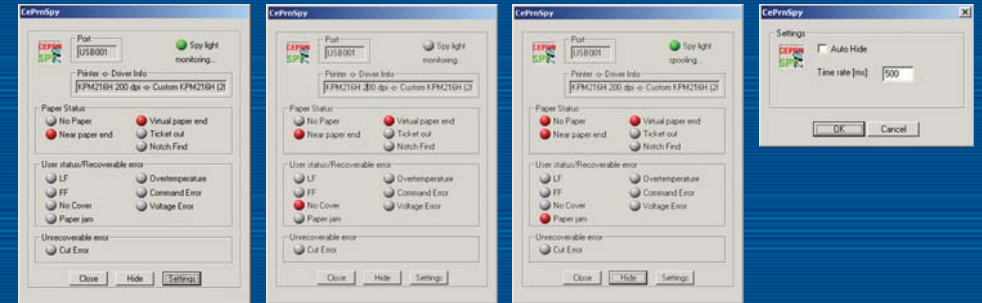
Version without ejector is available on request.



Vertical Mounting

Status Monitor

additional printing driver component that gives remote visibility of paper and printer status, jams, near-end of paper and end of paper status and information on the number of tickets or prints. The software can even be set to send email alerts or SMS, making easier remote maintenance operations.



Status Monitor

KPM216H

- Small Footprint
- A5/A4/US Letter Paper Size
- Ejecting/Retracting
- 200/300 dpi Printing Resolution
- Status Monitor



	200 dpi model	300 dpi model
Printing method	Thermal fixed head	
Resolution	203 dpi (8 dots/mm)	300 dpi (12 dots/mm)
Printing speed*	125 mm/sec (high speed)	100 mm/sec (high speed)
Paper width	210 mm / 216 mm (8,5" - letter)	
Roll dimension	Ø 180mm max.	
Print direction	Straight, 90°, 180°, 270°	
Type styles	Normal, 1x to 8x height and width, reverse, underscored, italic, bold	
Characters set	PC437, PC850, PC860, PC863, PC865, International	
Emulation	CUSTOM/POS	
Interfaces	RS232 + USB or RS232 + Centronics	
Data buffer	19 Kbyte	
Flash memory	1 Mbyte	
Graphics memory	5 logos of 1600 x 327 dots	5 logos of 2368 x 327 dots
Drivers	Win 2K, XP; Linux	
Software tools	Font Editor; Logo Editor, Status Monitor, DLL for developers	
Power supply	24 Vdc ± 10%	
Power consumption**	4A	4.5A
MTBF***	200.000 hours	
Head life	50Km / 100M pulses	100Km / 100M pulses
MCBF	500.000 cutter life	
Dimensions (mm)	270 x 190 x 90	
Weight	4.8Kg	



*depending on power supply utilized
 *average (50% dots on)
 ***electronic board